

IndependentNurse

June 2022 | £3.99

For primary care and community nurses

www.independentnurse.co.uk

IN THIS ISSUE

News

BAME nurses denied promotion

Racism is endemic in healthcare with white nurses twice as likely to get promoted, says RCN **p4**

News

RCN votes to lobby to protect the title of 'nurse'

An overwhelming majority at RCN congress votes to support protecting the title 'nurse' in law **p4**

News

Postcode lottery will exacerbate long COVID inequalities

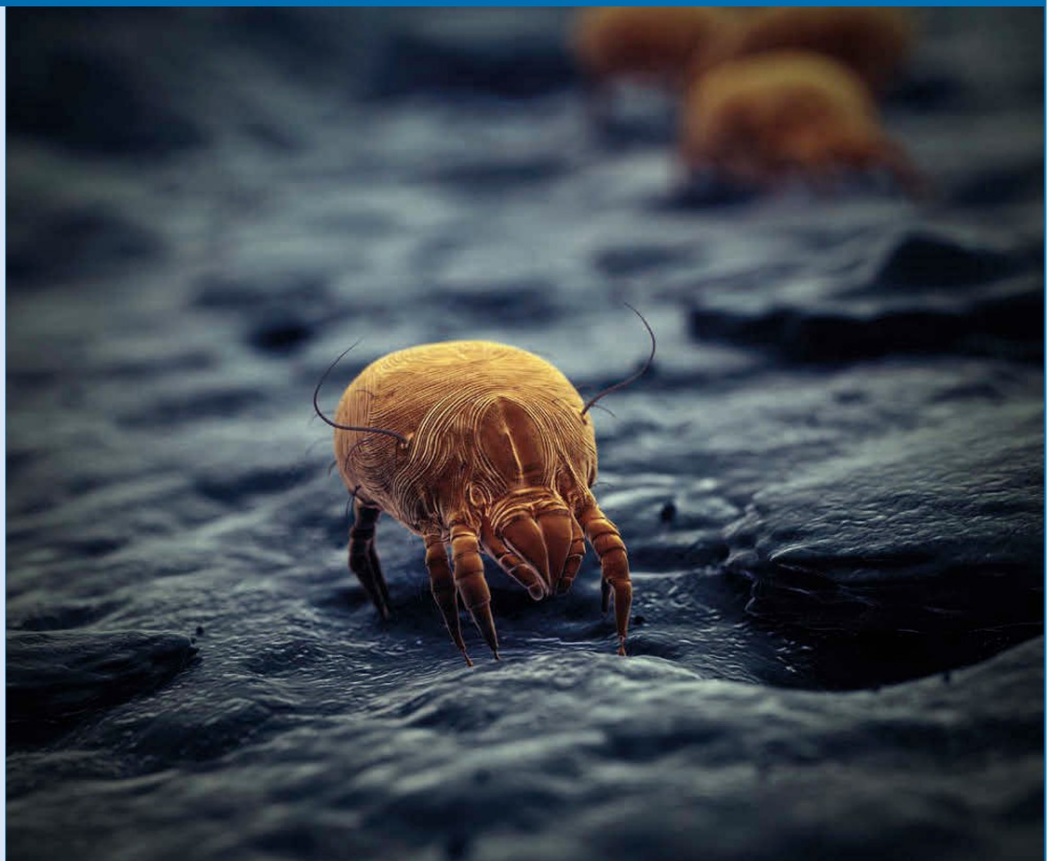
UK government urged to invest in nurse-led services and research to support the growing number of long COVID sufferers **p5**

News

Promising medicines to be fast-tracked to NHS patients

Patients promised earlier access to cutting-edge treatments on the NHS **p5**

RESOURCES
Events and training for primary care nurses **p30**



Understanding indoor air quality: A guide for nurses

Heather Henry looks at the impact of air pollution within our homes, a factor often overlooked when assessing a patient's health **p22**



NEWS FOCUS: The changing face of stroke care **p6**



Updated NICE guidelines on type 2 diabetes **p12**



Managing eczema in older adults **p17**